

© 2010 Arqiva
 All rights reserved. No part of this publication may be reproduced, stored in a retrieval system or transmitted in any form or by any means (Electronic, Mechanical, Photocopying, Recording or otherwise), without the prior written consent of the Company.

PROPOSED ANTENNA DETAILS

I.D. No.	ITEM	TYPE / SIZE	BEARING	MEAN FEEDER HEIGHT	FEEDER LENGTH	FEEDER TYPE	FEEDER No.	RET
TBC	1	AMPHENOL JAYBEAM 55075XX	0° E.T.N.	14.0m	20.0m	LDF4-50	1	NO
TBC	2	AMPHENOL JAYBEAM 55075XX	120° E.T.N.	14.0m	20.0m	LDF4-50	1	NO
TBC	3	AMPHENOL JAYBEAM 55075XX	240° E.T.N.	14.0m	20.0m	LDF4-50	1	NO
TBC	4	GPS ANTENNA	OMNI	11.0m	17.0m	CNT400	1	NO

NOTES

CELL No. NE034

CONTRACTOR: DALY INTERNATIONAL
 CONSULTANT: DALY INTERNATIONAL
 FAIRBANK HOUSE
 ASHLEY ROAD
 ALTRINCHAM, CHESHIRE
 WA14 2DP

ENGINEER: JOHN STOCKDALE
 0161 941 5481
 john.stockdale@dalyinternational.com

DRAWING MANAGER: JOHN BOOTE
 0161 941 5481
 john.boote@dalyinternational.com

PROJ No

PROJ No

PROJ No

PROJ No

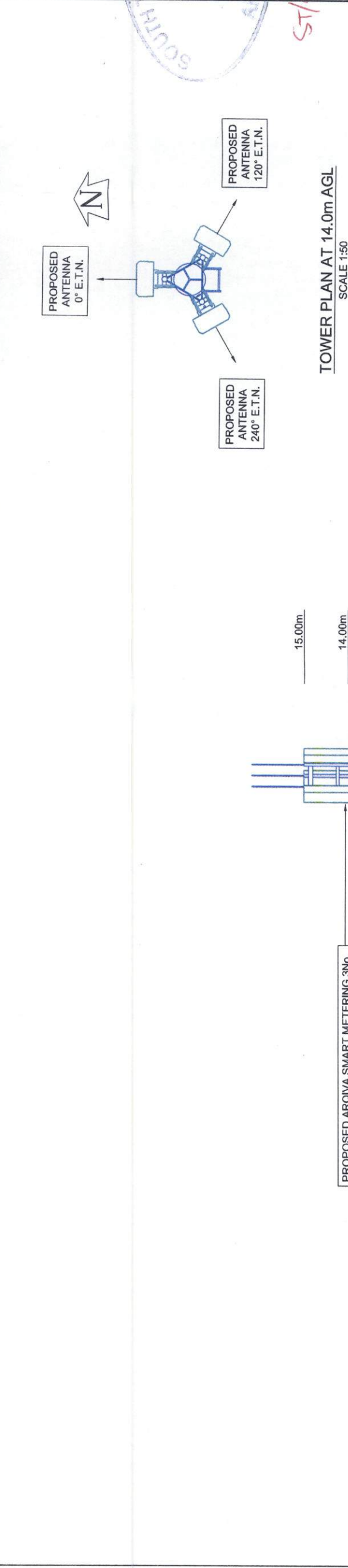
PROJ No 159018
 PLANNING ISSUE

ISS A

REVISION

DATE

DRN APP



arqiva

Crawley Court, Winchester, Hampshire, SO21 2QA
 Tel: 01962 823434, Fax: 01962 822378

SITE No 300849
 SM_NE034
 VICTORIA INDUSTRIAL ESTATE
 VICTORIA ROAD WEST
 HEBBURN
 TYNE AND WEAR
 NE31 1UB

OS GRID NZ 30404 63264
 NGR 430404, 563264

TITLE
 ELEVATION
 PROPOSED
 ARQIVA SMART METERING

SCALE 1:100

DRAWN DAL

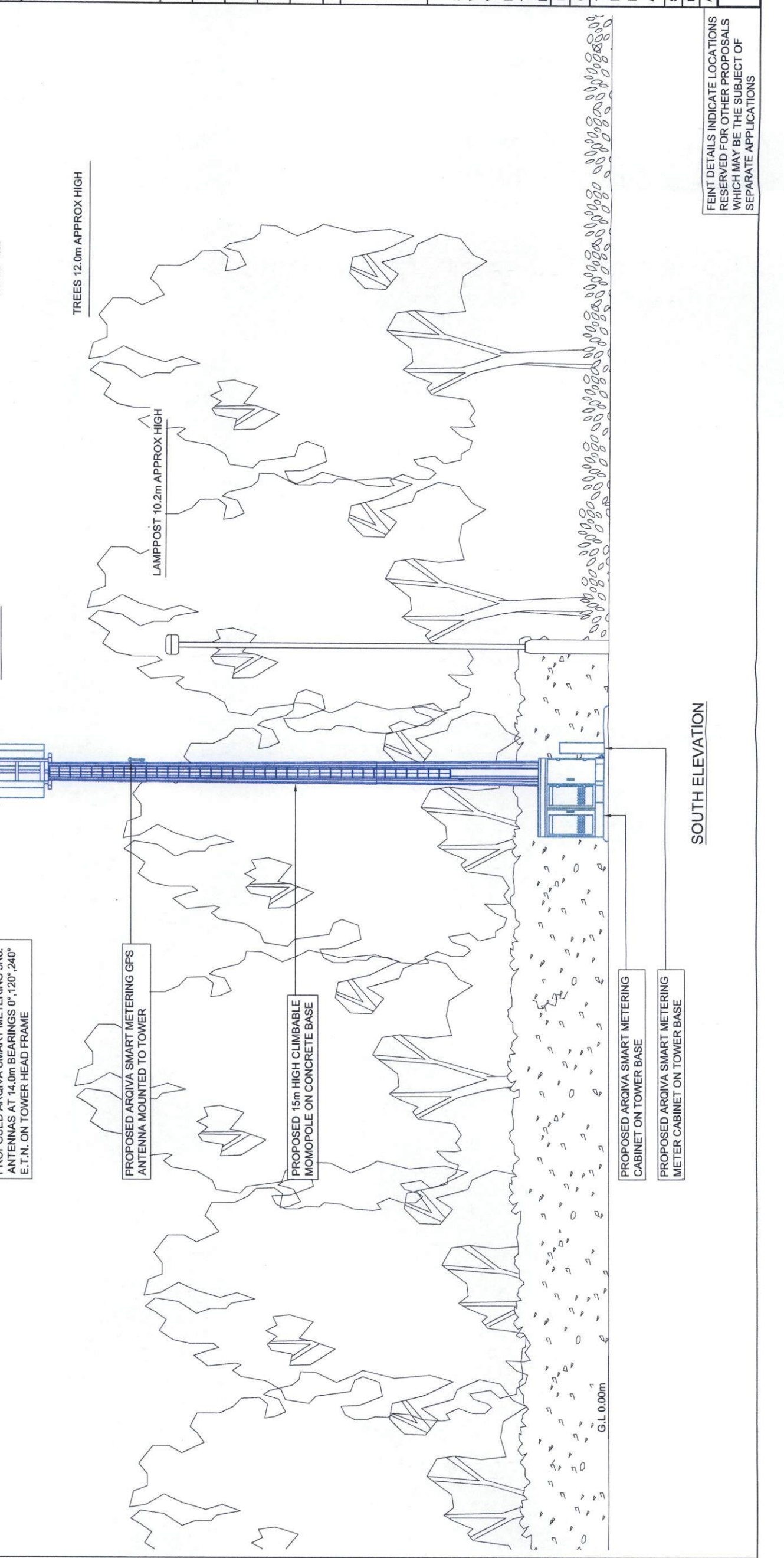
2011/14

APPROVED

DRG No. 300849 - 01-150 - MD001

Sheet 1 of 1

Rev A



FEINT DETAILS INDICATE LOCATIONS RESERVED FOR OTHER PROPOSALS WHICH MAY BE THE SUBJECT OF SEPARATE APPLICATIONS

A3